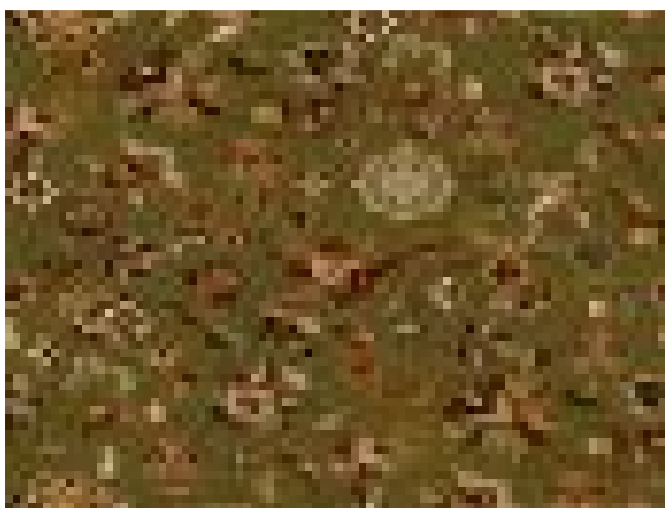


3224 IVORY



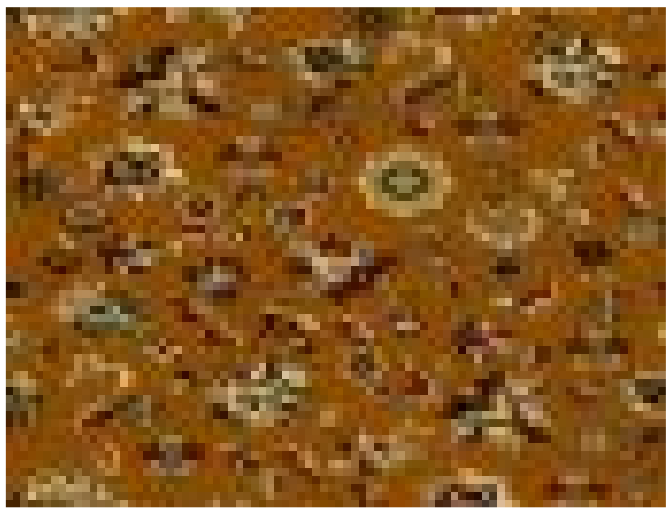
3225 BERBER



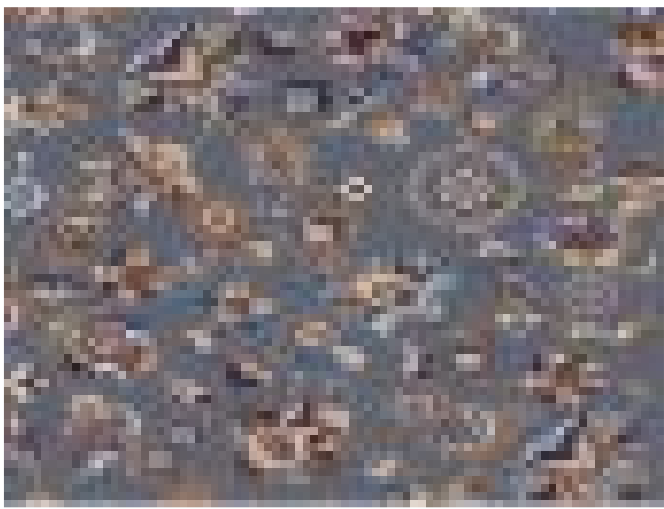
3232 E GREEN



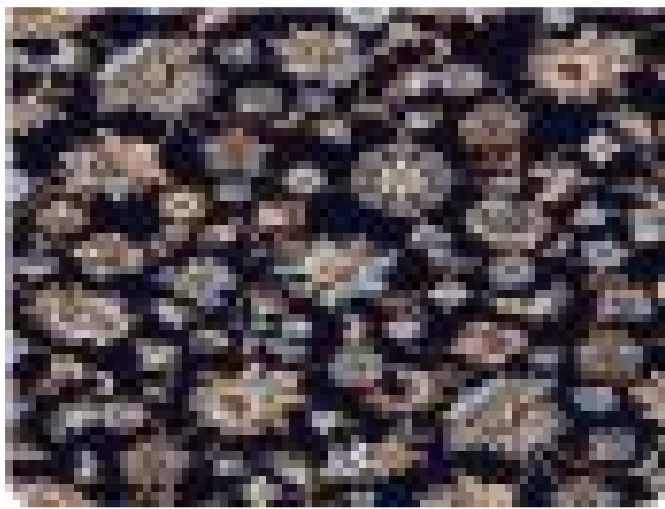
3252 DARK RED



3272 OCHRE



3241 GREY



3211 ROYAL BLUE

Technical Specifications:

Manufacturing Process: TUFTED	Pile Weight: 1650 GSM	Total Weight: 2600 GSM	Yarn/ Fibre: PP HEATSET
Width: 4.2 M	Pile Height: 11 MM	Construction: 150 SHOTS WOVEN CUT PILE	Roll Size: 25 LM

View in Studio