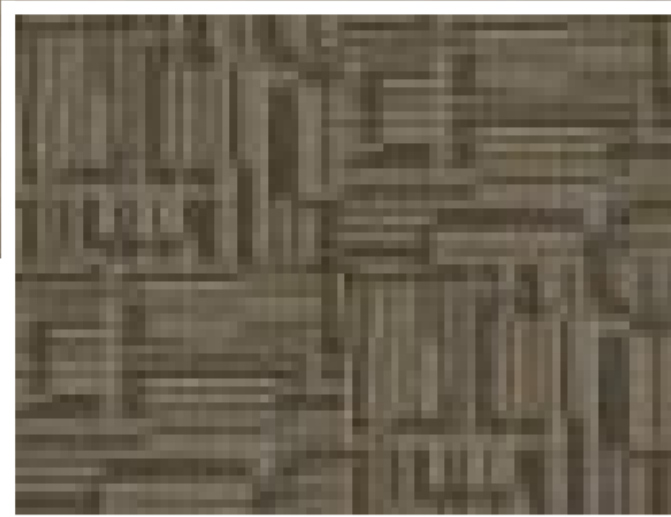
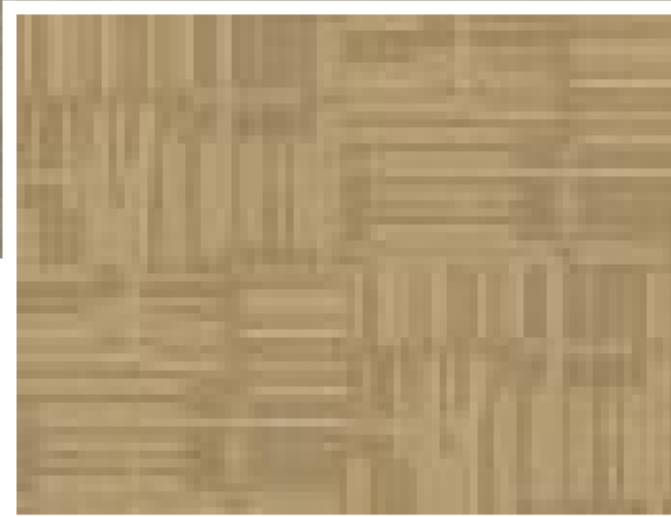


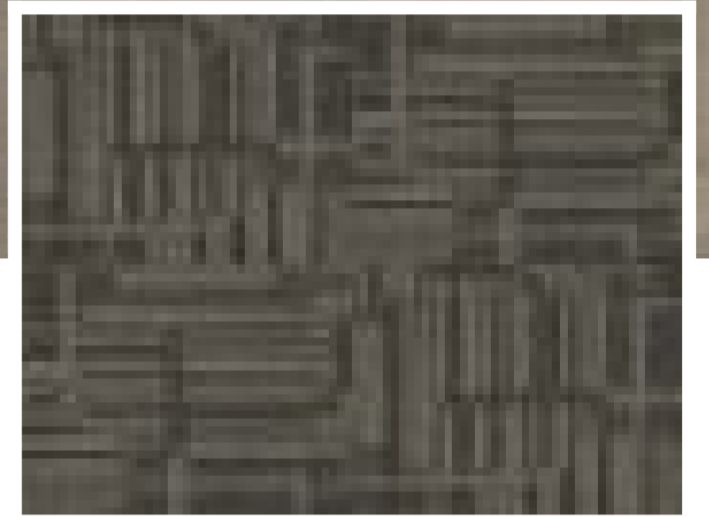
5211 BLUE



5223 BROWN



5221 BEIGE



5243 DARK GRAY

Technical Specifications:

Manufacturing Process:
TUFTED

Gauge:
1/12

Total Height:
5 MM

Pile Weight:
500 GSM

Backing:
BITUMEN WITH NON -WOVEN

Yarn/ Fibre:
POLYPROPYLENE

Plank / Tile Size:
50CM X 50CM

Pile Height:
5 MM

Construction:
MULTILEVEL LOOP PILE

[View in Studio](#)