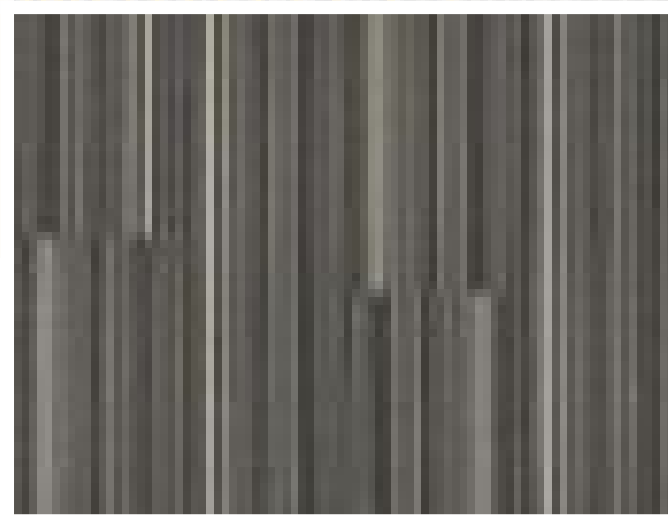


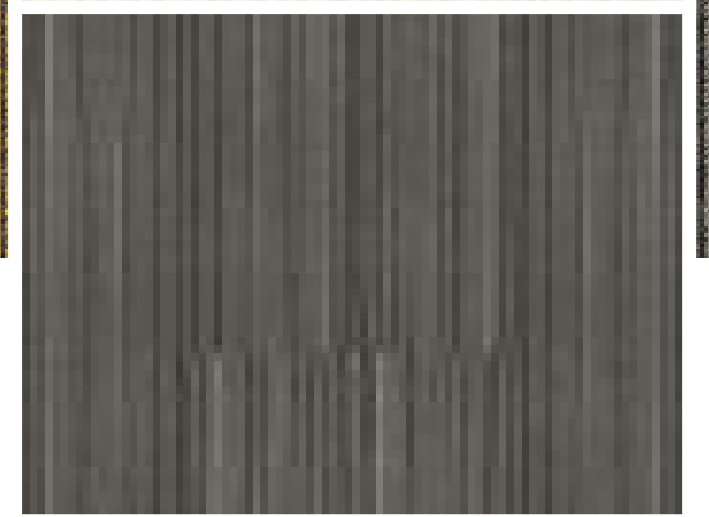
5011 BLUE



5031 GREEN



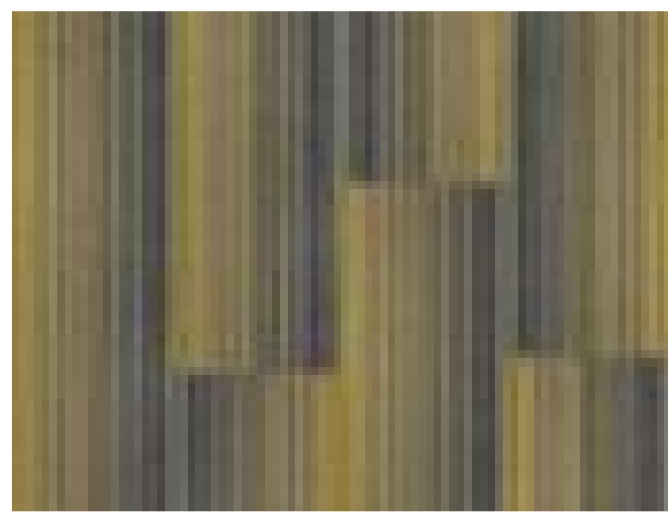
5042 SILVER



5043 GRAY



5061 ORANGE



5071 YELLOW

Technical Specifications:

Manufacturing Process:
TUFTED

Gauge:
1/10

Total Height:
3 MM

Pile Weight:
420 GSM

Backing:
BITUMEN

Yarn/ Fibre:
POLYPROPYLENE

Plank / Tile Size:
25CM X 100CM

Pile Height:
3 MM

Construction:
LEVEL LOOP PILE

[View in Studio](#)