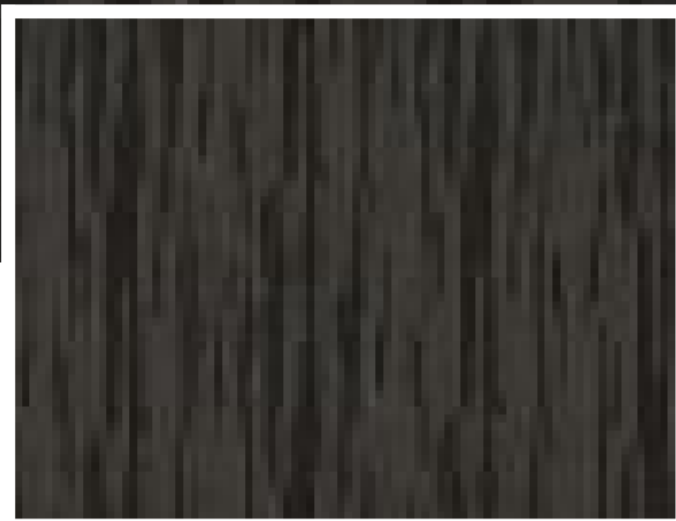
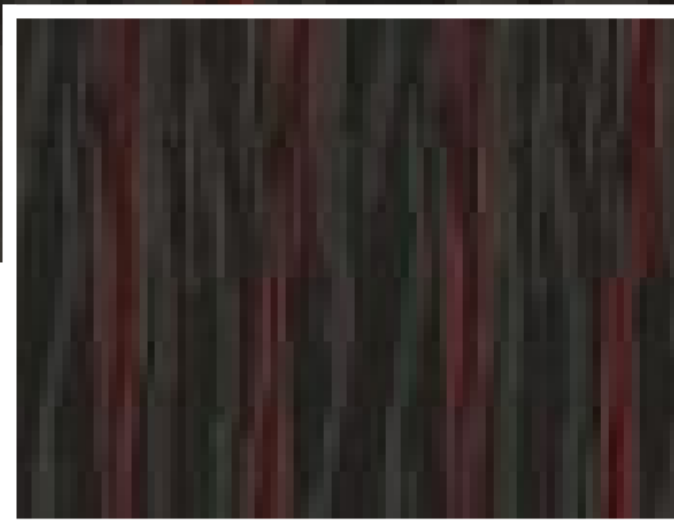


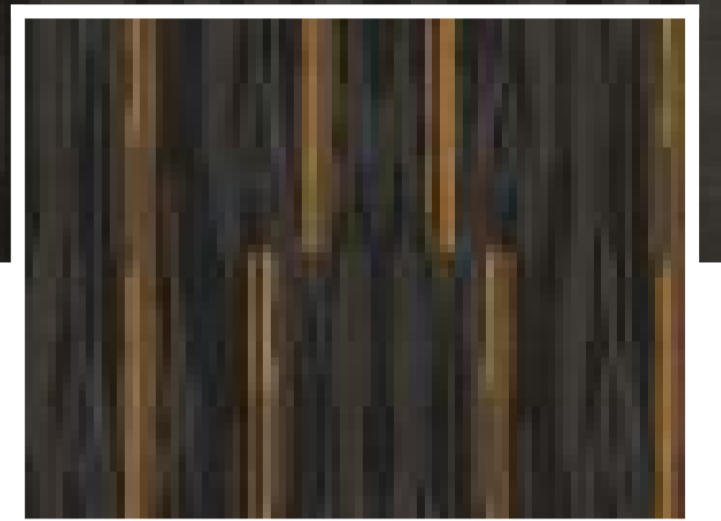
**4931 GREEN**



**4948 DARK GRAY**



**4951 RED**



**4966 ORANGE**

### Technical Specifications:

Manufacturing Process:  
**TUFTED**

Gauge:  
**1/12**

Total Height:  
**5 MM**

Pile Weight:  
**500 GSM**

Backing:  
**PVC**

Yarn/ Fibre:  
**POLYPROPYLENE**

Plank / Tile Size:  
**25CM X 100CM**

Pile Height:  
**5 MM**

Construction:  
**MULTI LEVEL LOOP PILE**

[View in Studio](#)