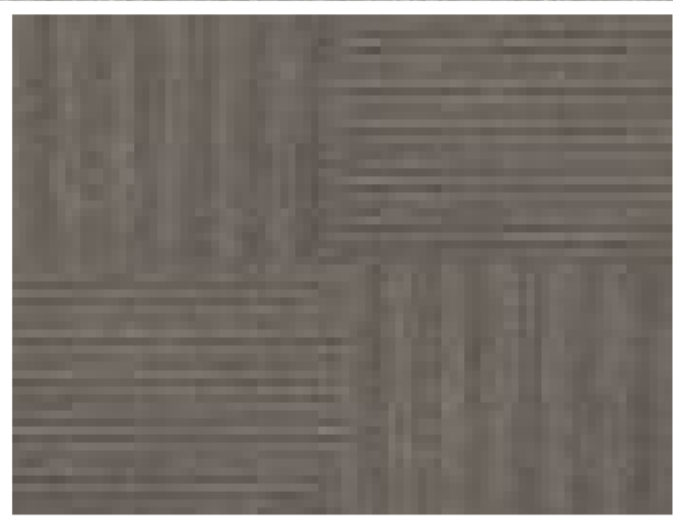
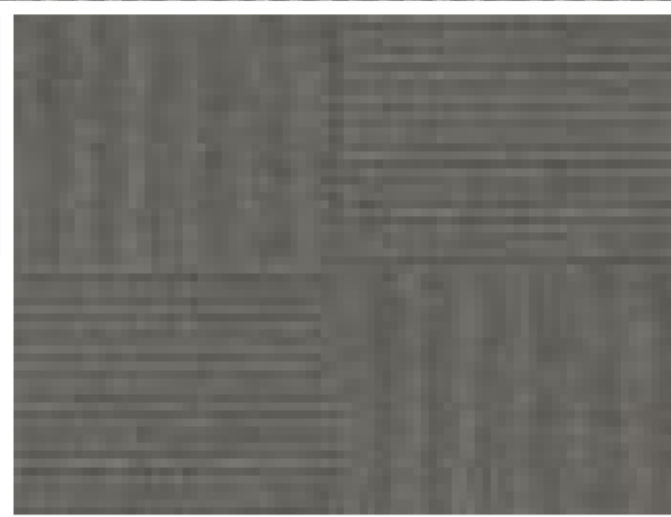


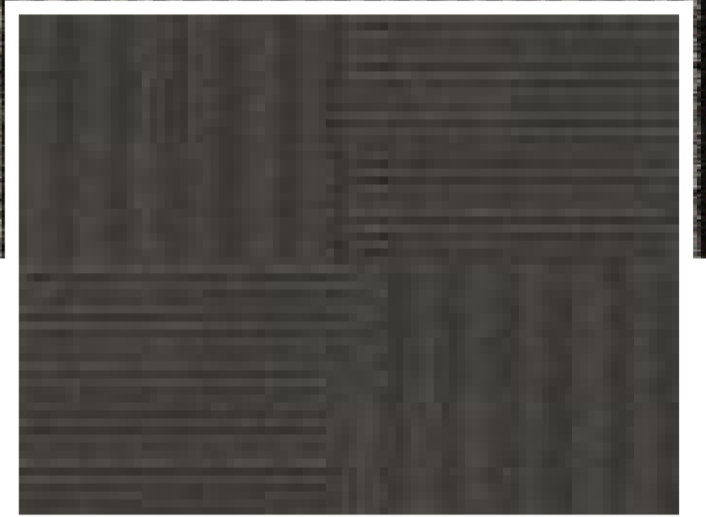
4813 BLUE



4823 BROWN



4841 GRAY



4845 DARK GRAY

Technical Specifications:

Manufacturing Process:
TUFTED

Gauge:
1/10

Total Height:
3 MM

Pile Weight:
400 GSM

Backing:
BITUMEN

Yarn/ Fibre:
POLYPROPYLENE

Plank / Tile Size:
50CM X 50CM

Pile Height:
3 MM

Construction:
LOOP PILE

[View in Studio](#)